



## Leeside Crescent | London | NW11

£4,250 Per month |

 5  3  2  D

**ADN**  
RESIDENTIAL

A bright and spacious five-bedroom family home ideally situated in the heart of Temple Fortune, just 0.1 miles from the excellent amenities along Finchley Road. Extending to over 1,700 sq ft, this superb property offers well-designed accommodation throughout, including a large open-plan kitchen/family room opening onto a private garden, a separate reception room, a principal bedroom with bay window and en-suite shower room, four additional double bedrooms, two family bathrooms, a utility room, and a guest WC. Additional benefits include double-glazed windows, ample storage, and contemporary fixtures and fittings throughout.

- 
- Open Plan Kitchen/Reception Room
  - Family Room
  - 5 Double Bedrooms
  - 3 Bathrooms
  - Private Garden
  - Permit Parking
- 

Council Tax Band: F  
EPC: D



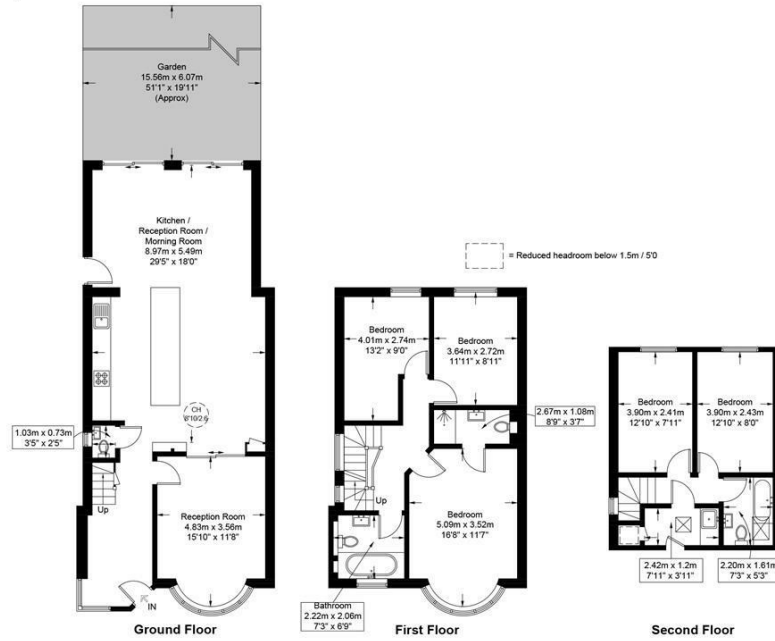
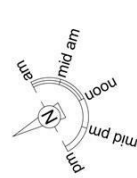




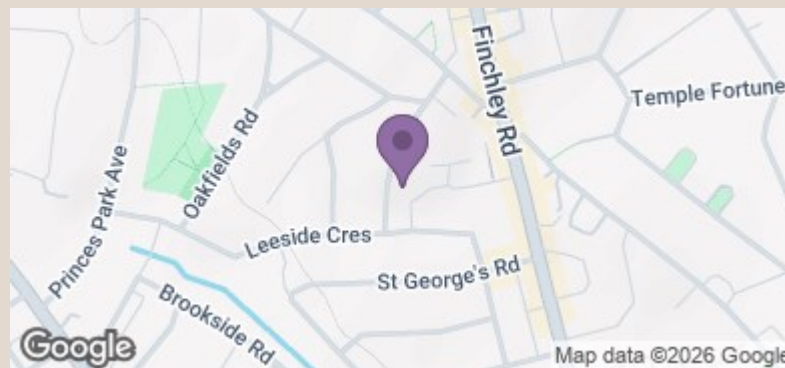
## Leeside Crescent, NW11

Approximate Gross Internal Area = 1731 sq ft / 160.8 sq m

Restricted Height = 4 sq ft / 0.4 sq m



This plan is for layout guidance only and is not drawn to scale unless stated. All dimensions, including windows, doors, and the Total Gross Internal Area (GIA), are approximate. For precise measurements, please consult a qualified architect or surveyor before making any decisions based on this plan.



Energy Efficiency Rating		Current	Potential
Very energy efficient - lower running costs			
(92 plus)	A		
(81-91)	B		83
(69-80)	C		
(55-68)	D	67	
(39-54)	E		
(21-38)	F		
(1-20)	G		
Not energy efficient - higher running costs			
England & Wales		EU Directive 2002/91/EC	

info@adnresidential.co.uk | 020 7407 5155